



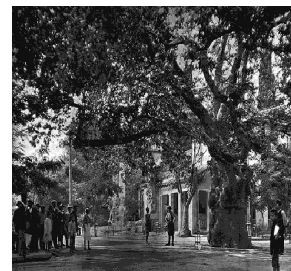
MUNICIPALITY OF KIFISSIA

Kifissia is one of the most historic and large municipalities of Attica. It is situated in the northern suburbs of Athens, mainly accessed via Kifissias avenue. It is home to the Train's terminal station, presently a part of the Athens Metro project. The Cephissus river runs to the west of Kifissia and has his name derived from the city, and half of the municipality is taken up by a part of the Penteli mountain; the rest consists of elegant urban areas to the west, surrounded by popular and upmarket areas such as Kefalari and Politeia to the north, and Nea Kifissia to the south-west. Kifissia is a famous recreational neighbourhood for people of all ages from all over Athens, because of many available types of entertainment, numerous fashionable shopping malls, as well as many smaller designer shops and upmarket restaurants, bars and nightclubs. It is also home to the Kefalari Park, the most popular place for younger people to socialize.

From antiquity to today

Kifissia, an ancient and important city, was one of the twelve "cities" under which the mythological king Kekrops had united all the small settlements of Attica.

During the 5th c. BC the economical, social, cultural development of Athens was extensive and consequently as well as Kifissia's evolvement, as a result of the inhabitants mainly preoccupation with their layd.



- During the 16th century, Kifissia was the biggest town with the exception of the capital city of Athens.
- During the Ottomans occupation Kifissia blossomed because the wealthy Turks country houses were suited at this historical suburb.
- During the years of King Otto (1833-1862) the economy of the village was mainly based on farming and cattle-raising.
- The first year after the Asia Minor Disaster were very difficult for the locals and the refugees. The Organization for the Refugees of Kifissia was founded in 1923. After a great effort they managed to expropriate 38 acres at the borders of Kifissia, which is based in the area of Nea Erythraia nowadays.
- On 16th February 1925, Kifissia, with a Royal Ordinance, was detached from the Municipality of Athens and declared a separate Community covering the districts of Ekali (was detached in 1928) and N.Erythraia (was detached in 1934).
- Early hours of 28th October 1940. In his house in Kifissia, Ioannis Metaxas said the historic "NO" to Mussolini's ultimatum.

As we are completing this brief history of Kifissia, we have to mention that many famous and important people lived in Kifissia



Municipality of Kifissia Subdivisions

Nea Erythraia and Ekali became a part of the enlarged Kifissia Municipality.

Nea Erythraia

Nea Erythraia, is a suburb in the northeastern part of Athens Greece. After the drastic overhaul of the administrative system of Greece in 2011, Nea Erythraia became a municipal unit.

Nea Erythraia is accessed with the 2.5 km west near the western part of Kifissia; the mountains of Parnitha lie to the west and Pendeli lies to the east.



The areas around Nea Erythraia were once made up of farmlands, mainly pastures or groves. Suburban housing arrived in the 1970s and continued to develop slowly in the 2000s, mainly to the west.

Ekali

Ekali it is a purely residential area. Due to that retail, commercial shops and professional businesses are not found within the community.

Until the 1960s and the 1970s, farmlands covered the western part of Ekali. Urban development accelerated in the 1960s and the 1970s, with the establishment of luxury houses in the earlier mainly forested sections of the area.





Museums & Foundations

- The wealth of the archaeological findings discovered in Kifissia led us to establish the Archaeological Collection of Kifissia. The collection contains among others, sculptures of the classical and roman periods.



- Goulandris Museum of Natural History

it introduces visitors to the kingdom of plants and animals in a clear scientific way

- Gaia Centre

its research is mainly focused on the study and reinstatement of the natural resources which conserve life.

- Drossini Museum

it is housed in a villa where our great poet spent the last 15 years of his life.

- Skironio Centre

it is an open air museum which gives the visitor the opportunity to get in contact not only with works of contemporary sculpture but with nature as well.

- Benaki Museum Historical Archives

The Historical Archives of the Benaki Museum, constitute the best organised and richest record office in Greece.

- Pinacoteque Kouvoutsakis

A non-profit, public welfare institution that promotes fine art with emphasis on Greek figurative painting and sculpture.

- The Tschritzi Foundation of Fine Art

The aim of the TFFA is mainly the undertaking and coordination of initiatives for the promotion of fine art.

Parks

Our specially formed nature parks are accessible to visitors, apart from the local people in order to give them the opportunity to spend their time leisurely. There is a big variety of wild-life species and nature reserves gives their best to offer to the public an unforgettable memory. The office of environmental protector and more specific the department of green and gardening manage so that all visitors can get a nice promenade in the public parks and get the most of it.



- Kifissia's Park 'Dimitris Zomopoulos', is one of the greatest and most historical parks within the Municipality of Kifissia. Located in the centre of the city, it is a large park with water fountains and lush greenery.

- "Andreas Papandreou" Fun Park

the park was basically designed for younger visitors but anyone can enjoy it.

- "Syngrou" Park

the 97 hectare estate was bequeathed to the city for more than 80 years and it is best described as an area of unspoiled countryside where people can forget for a while that they are close to the centre of the capital city.



Within the complex there is also a small open-air theatre and a Gothic church.



Industrial Development Zone

Modern City of Kifissia has held on to its tradition in accordance with its development and made itself one of the most prominent cities in Athens.

We are encouraging and supporting appropriate investment incentives and strong infrastructure.

Key features of this zone can be found to the fact that it lies on the edge of a regional city that is able to offer high quality social, cultural and sports amenities.

Over the last few years our Industrial development zone was assessed as a business status place for prominent and distinguished business organizations.

The Flower Show of Kifissia

Is one of the oldest events of Greek floriculture. Since 1936, when it first opened its doors, the show is a spring highlight for Athens.

The Mayor of Kifissia, Nicolas Chiotakis, said *“we strongly believe that we have to give more to an upcoming force of people who care more day by day for the environment”*.

The Flower Show of the Municipality of Kifissia, within the spirit of exchanging knowledge and ideas, cooperates successfully with European countries, mainly through their Embassies in Greece, on subjects related to floriculture and nature in general.



Kifissia is a city with a strong emphasis on the quality of every day life. A community with a unique natural environment preserved and enhanced by careful community planning.

Our Municipality offers a wide range of opportunities for employment, education, recreation and culture.





Activities offered by our Municipal Services:

- CENTRE of Social Policy

A modern social service which aims at helping our residents both socially and psychologically and improving their standard of living.



- CENTRE of Culture

It was founded to promote and enhance the cultural development through educational and traditional artistic programs, as well as to offer free seminars to anyone who wants to broaden his knowledge through the Open University courses it Coordinates and manages established annual Celebrations and other cultural activities throughout the year.



- LENDING Library

- CENTRE of Open Care for the Elderly

It offers professional treatment to the members

- SPORTS Organization

It offers a variety of sports activities for all ages

- MUNICIPAL Police

A special service that was formed to observe the rules which concerns sanitation, parking of vehicles and create better living conditions for town's residents.



- CITIZEN Service Centre

It serves daily 50.000 citizens by providing information and actions of administrative matters.



Participation of Municipality of Kifissia in EU Programs

1. NEW MEDIA EDGE, UNDER CULTURE 2000 (PARTNER)
2. IMAP, UNDER CULTURE 2000 (LEADER)
3. RECITE II (PARTNER)
4. TROSS, UNDER ECOS OUVERTURE (PARTNER)
5. LIFE (PARTNER)

These programmes encouraged cooperation in the field of Education, Environment, Culture, Training and New Technologies Communication.

Priorities

Apart from promoting the financial and professional services industry in the Municipality, the Mayor at the same time supports the alternative responsibilities, from providing excellent services to the local community, to maintaining parks, museums, and other arts venues. The City also supports a number of schools.





In particular its priorities are:

- The improvement of the open space system – city parks, neighbourhood parks, playing fields.
- To improve City circulation with walkable, safe and pedestrian-friendly streets.
- To preserve city’s historic character and valuable architectural recourses (blocks-streets-buildings)
- To encourage local business
- The implementation of EU programmes for promoting development by connecting people, ideas and resources.
- The participation in EU initiatives concerning sustainable use of energy, urban development in terms of sustainable environmental solutions.
- To create an active Centre City with a variety of a 24/7 uses for day and night.



BIOGRAPHY of Mayor Chiotakis

Nikos G. Chiotakis is the Mayor of the City of Kifissia. He was born on the 19-4-1963 and raised in Kifissia, where his father served as Deputy Mayor, for several years.



Mayor Chiotakis’ interest for nature and the conservation of the environment was obvious from the early stages of his life, leading him thereafter to take courses at the Agricultural University of Athens, where he graduated in 1990, with a degree in Landscape Engineering. By the end of his studies, he started up his own business as a plant producer, which he is successfully maintaining even to our days.

In 1999 –2002 he was elected as a member of the board of councilors of the Municipality of Kifissia, where he served during the four year administration period at the position of President of the Municipality Company “Development of Kifissia”. During the same period, he undertook some further responsibilities, such as that of the President of the flower Exhibition Organization. This organization is responsible for the Kifissia Flower exhibition, taking place every year gathering a large number of exhibitors from all over Athens, considered to be one of the most important cultural events of the City.

Advancing further into the ranks, in 2002 he led the campaign for the Mayor ship of Kifissia, where he was elected with a strong majority vote of 57, 7%. Having completed his first term of Mayor of Kifissia, four years later he was re-elected in 2006, with a majority vote of 48%. Year 2010 he continued his successful carrier and he was elected for the third time

2007

President of the United Association of Municipalities and Communities of Attica

2011 **Secretary General** in the Regional Union of Attica Municipalities.

Mayor Chiotakis is married and has two daughters.